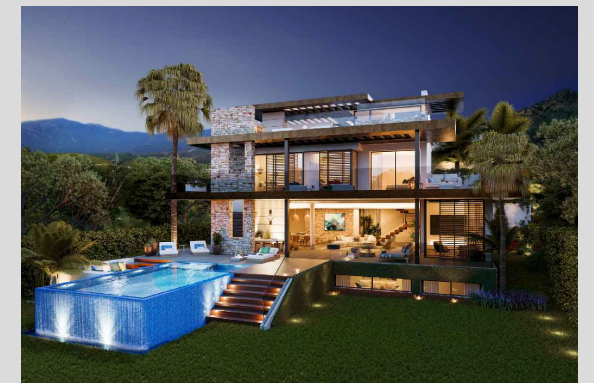


SCALE BAR  
0 0.5 1 2 3M

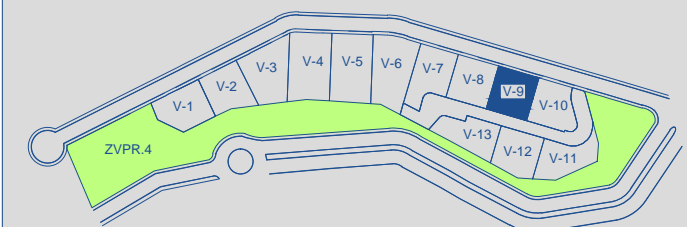
These images are not contractual but only for illustrative purposes. The images are subject to technical, legal or commercial modifications approved by the project Management or the competent authority. The 3D images corresponding to the façades, common elements, and the rest of the spaces are merely indicative and will be subject to verification or modification in the technical projects. The furniture of the 3D images is not included and the equipment of the villas will be indicated in the corresponding BUILDING and quality specifications. The energy certification corresponds with the one established in the project in process. All the information and documentation will be provided according to the terms established in the Royal Decree 515/1989 and in the rest of the autonomous or state regulations currently in force that could complement the mentioned decree.

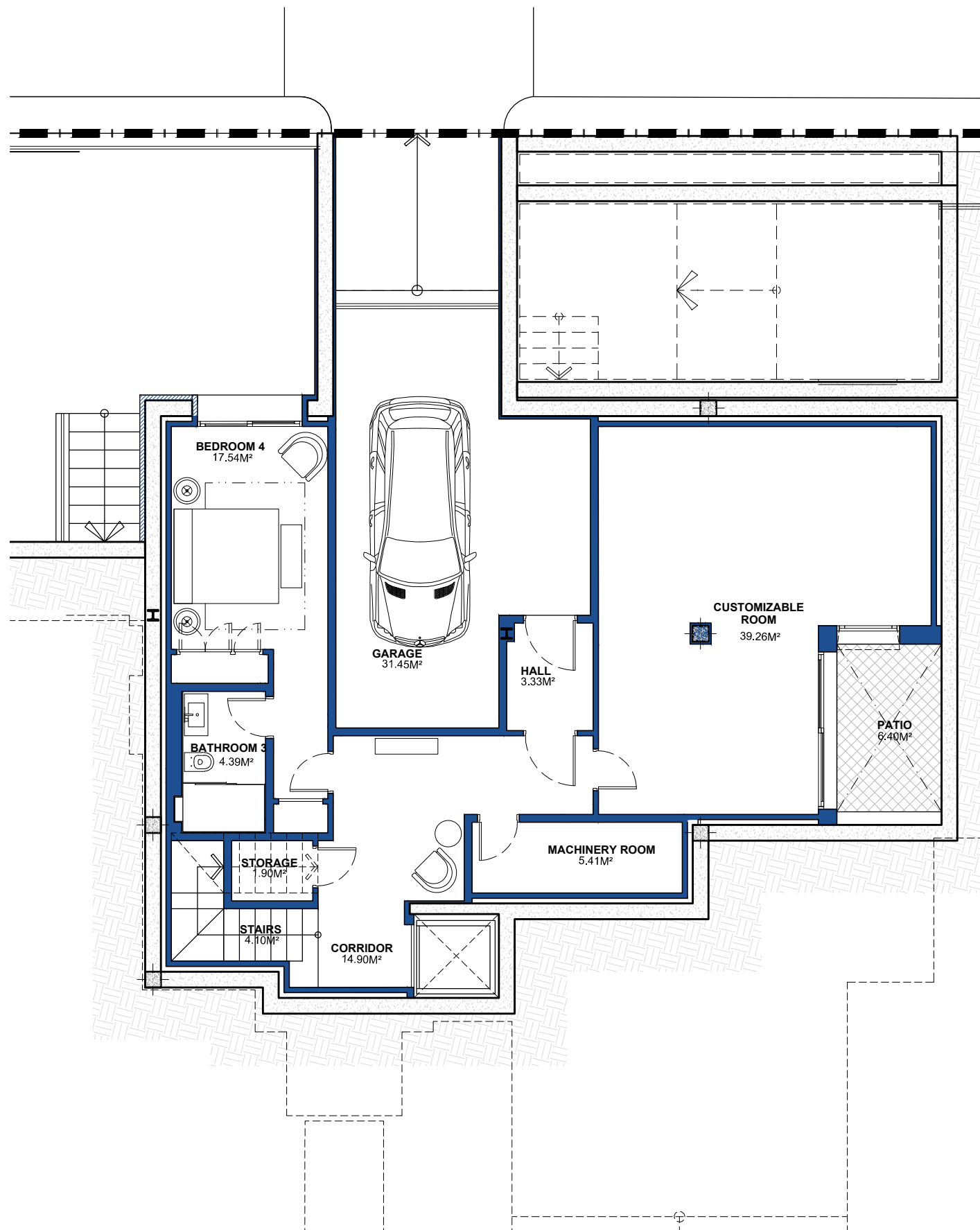
## VILLA 09 Site Plan



APPROXIMATE AREAS	M <sup>2</sup>
Basement built area	166,12
Ground floor built area	201,37
First floor built area	145,85
Solarium built area	90,22
Parking area	49,31
Pool area	33,25
Total	686,12
Plot 09 area	500,23
Community green area	5.388,69
Total useful area	298,49

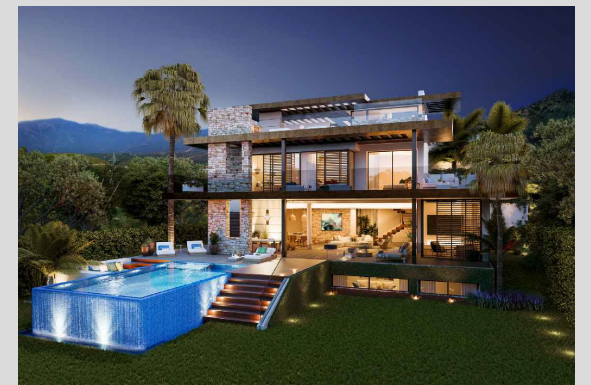
## SITE PLAN





These images are not contractual but only for illustrative purposes. The images are subject to technical, legal or commercial Modifications approved by the project Management or the competent authority. The 3D images corresponding to the façades, common elements, and the rest of the spaces are merely indicative and will be subject to verification or modification in the technical projects. The furniture of the 3D images is not included and the equipment of the villas will be indicated in the corresponding Building and quality specifications. The energy certification corresponds with the one established in the project in process. All the information and documentation will be provided according to the terms established in the Royal Decree 515/1989 and in the rest of the autonomous or state regulations currently in force that could complement the mentioned Decree.

## VILLA 09 Basement

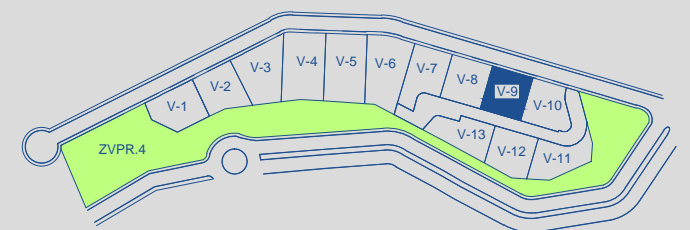


**BUILT AREA** 166,12 M<sup>2</sup>

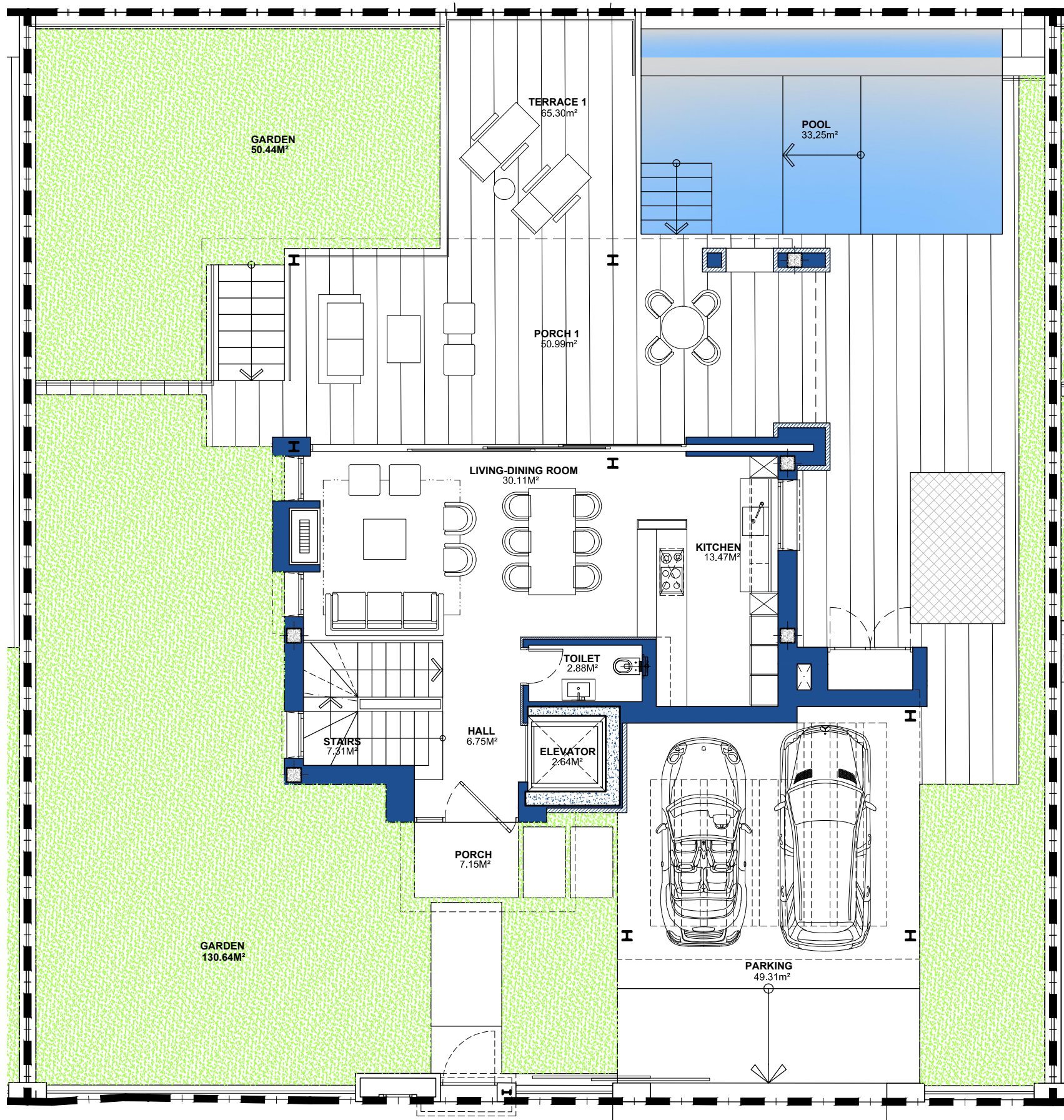
**APPROXIMATE USEFUL AREAS** M<sup>2</sup>

Bedroom 4	17,54
Customizable Room	39,26
Bathroom 3	4,39
Garage	31,45
Other Areas	29,64
Total	122,28

## SITE PLAN



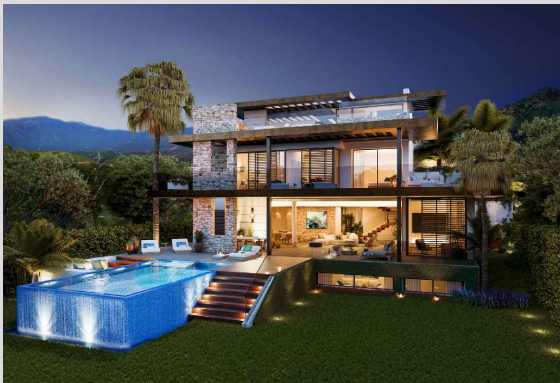




These iMages are not contractual but only for illustrative purposes. The iMages are subject to technical, legal or coMmercial Modifications approved by the project ManageMent or the coMpetent authority. The 3D iMages corresponding to the faades , coMMon eleMents, and the rest of the spaces are Merely indicative and will be subject to verification or Modification in the technical projects. The furniture of the 3D iMages is not included and the equipMent of the villas will be indicated in the corresponding BUILTing and quality specifications. The energy certification corresponds with the one established in the project in process. All the inforMation and docuMentation will be provided according to the terMs established in the Royal Decree 515/1989 and in the rest of the autoNoMous or state regulations currently in force that could coMpleMent the Mentioned Decree.



VILLA 09 Ground Floor



BUILT AREA 201,37 M²

APPROXIMATE USEFUL AREAS M²

Living-Dining Room	30,11
Kitchen	13,47
Toilet	2,88
Other Areas	16,70
Porches and Terraces	123,40

186,56

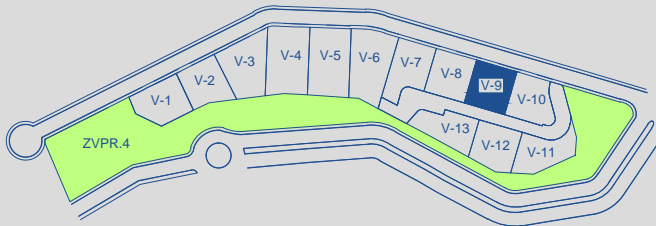
Pool 33,25

Garden 181,08

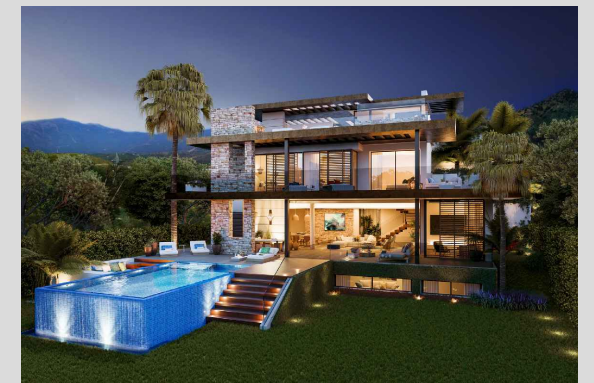
Parking 49,31

Total 450,20

SITE PLAN



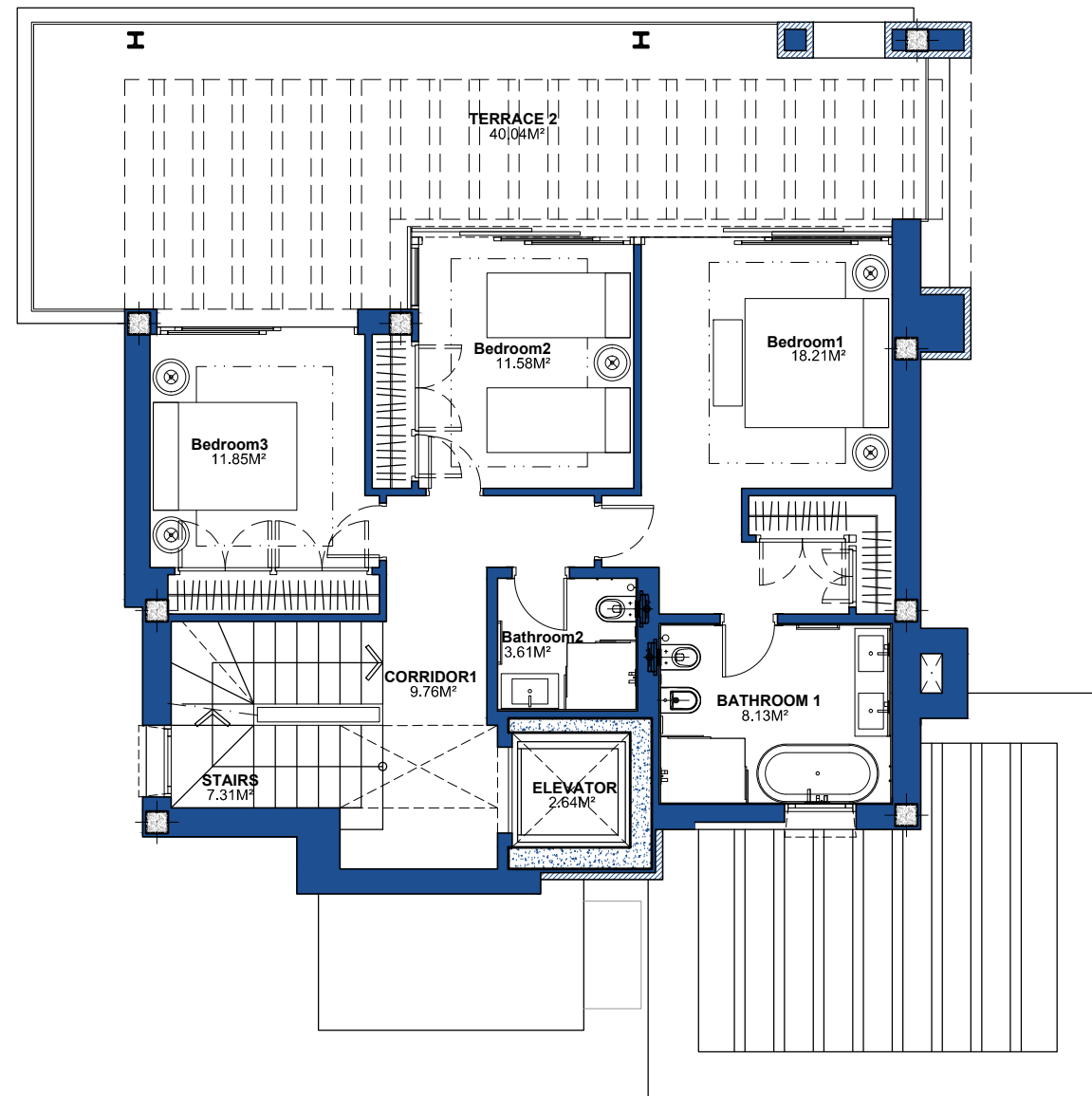
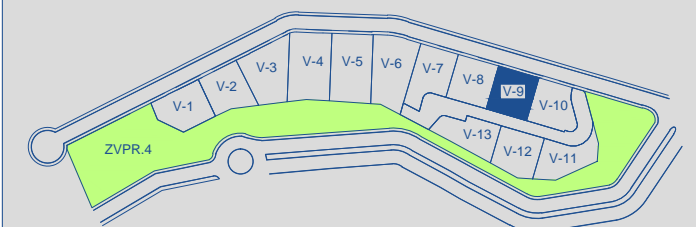
## VILLA 09 First Floor



**BUILT AREA** 145,85 M<sup>2</sup>

APPROXIMATE USEFUL AREAS	M <sup>2</sup>
Bedroom 1	18,21
Bedroom 2	11,58
Bedroom 3	11,85
Bathroom 1	8,13
Bathroom 2	3,61
Other Areas	19,71
Porches and Terraces	40,04
Total	113,13

## SITE PLAN

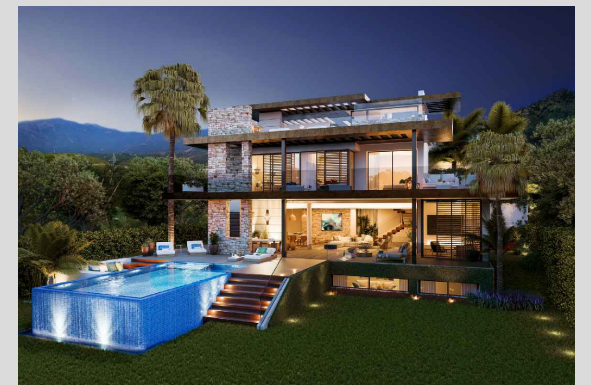


These iMages are not contractual but only for illustrative purposes. The iMages are subject to technical, legal or coMmercial Modifications approved by the project ManageMent or the coMpetent authority. The 3D iMages corresponding to the façades , coMMon eleMents, and the rest of the spaces are Merely indicative and will be subject to verification or Modification in the technical projects. The furniture of the 3D iMages is not included and the equipMent of the villas will be indicated in the corresponding BUILTing and quality specifications. The energy certification corresponds with the one established in the project in process.

All the inforMation and docuMentation will be provided according to the terMs established in the Royal Decree 515/1989 and in the rest of the autonoMous or state regulations currently in force that could coMpleMent the Mentioned Decree.



VILLA 09 Solarium

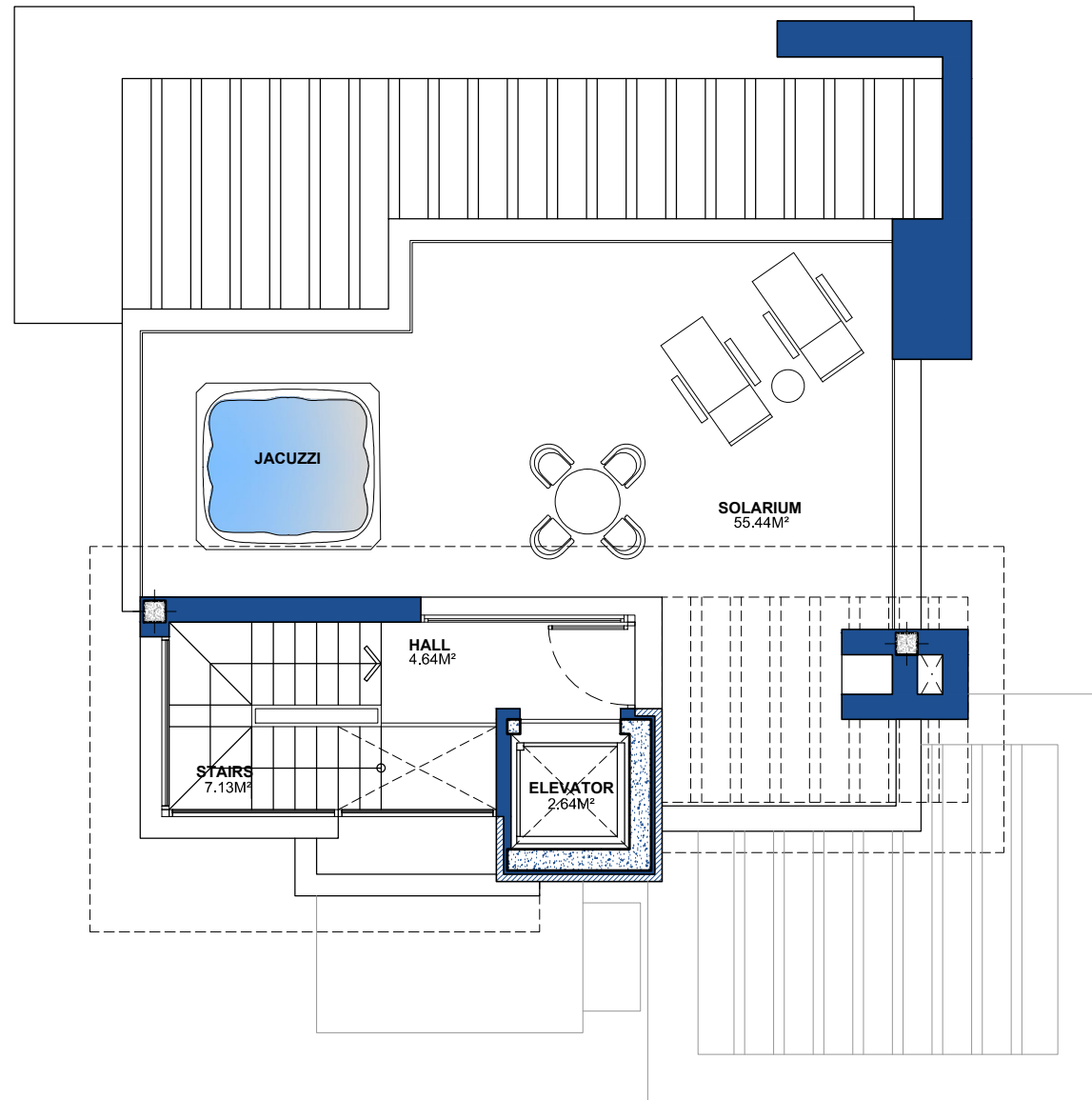
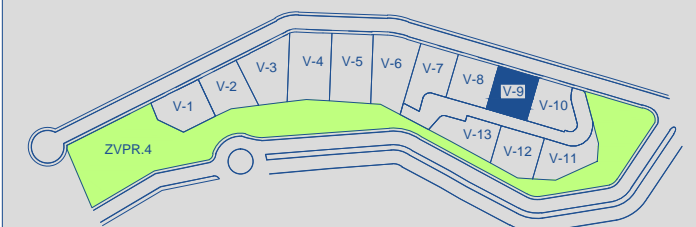


BUILT AREA 90,22 M<sup>2</sup>

APPROXIMATE USEFUL AREAS M<sup>2</sup>

Hall	4,64
Other Areas	9,77
Porches and Terraces	55,44
Total	69,85

SITE PLAN



These images are not contractual but only for illustrative purposes. The images are subject to technical, legal or commercial Modifications approved by the project Management or the competent authority. The 3D images corresponding to the façades, common elements, and the rest of the spaces are merely indicative and will be subject to verification or modification in the technical projects. The furniture of the 3D images is not included and the equipment of the villas will be indicated in the corresponding Building and quality specifications. The energy certification corresponds with the one established in the project in process. All the information and documentation will be provided according to the terms established in the Royal Decree 515/1989 and in the rest of the autonomous or state regulations currently in force that could complement the mentioned Decree.